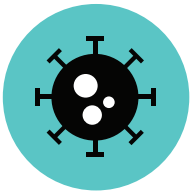
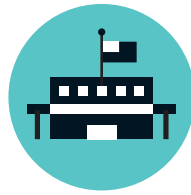


EXAMPLES OF ISSUES / GOVERNMENT SERVICES



COVID-19

- Testing and Vaccine Access
- Unemployment Support
- Stimulus Checks



CHILDREN AND SCHOOLS

- Child Care
- Remote Learning
- Special Education



HEALTHCARE

- Health Insurance
- Medicare / Medicaid
- Disability Services
- Hospital Closures



HOUSING

- Section 8
- Public Housing
- Homeless Services / Shelters



CRIMINAL JUSTICE REFORM

- Reentry Services
- Police Funding
- Appointment of Judges
- Probation and Parole



INCOME / SUPPORT

- Welfare
- SNAP / Food Stamps / WIC
- Social Security



OTHER:



**WHICH THREE
ISSUES
OR SERVICES
ARE MOST
IMPORTANT
TO YOU?**

WHY VOTE ONE MORE TIME?

Senators make **decisions that affect all these services and issues**. They can decide to:

- **Cut or** provide funding
- **Protect or** eliminate services

By voting, you can have a say in who's making those decisions.

Why would YOU want to vote and have a say in who is elected Senator and will make decisions about those services and issues?

People might be reaching out to you so you will register and vote. What questions do you have about being able to vote in the January 5th election?

Ask as many questions as you can.

What did you learn?

For more information about registering and voting, contact:

- Vote.org (for registration by December 7th) 1-866-687-8683 (Election Protection Hotline)
- New Georgia Project: www.newgeorgiaproject.org
- Georgia Justice Project: www.gjp.org/voting



Created in collaboration
with DJ Sims